

mindray



Tiara Medical
МЕДИЦИНСКОЕ ОБОРУДОВАНИЕ

DP-50Expert

Diagnostic Ultrasound System



To deliver on the promise of providing high-quality and effective healthcare, Mindray continues to develop advances in medical technology to improve the quality of patient care. Equipped with PW Doppler and 3D/4D capabilities, the DP-50Expert offers more than your expectation. With a smart new shape and full screen design, enhanced mobility and more convenient operations, this reliable and affordable system will enhance general practices and is well-suited for multiple clinical needs.



Exceptional capability

Your need for professional and advanced tools combined with quality imaging and ease of usability can now be met with Mindray's new portable system DP-50Expert.

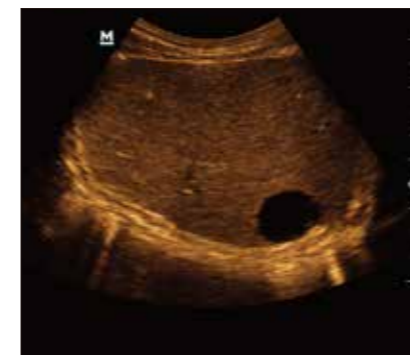
- **PW Doppler and Auto Trace:** Reveal details of blood flow for more comprehensive diagnosis
- **GI solution:** iScape View and Auto IMT package
- **OB solution:** 3D/4D imaging with iLive realistic view, Smart Face and Smart OB

Mobile design

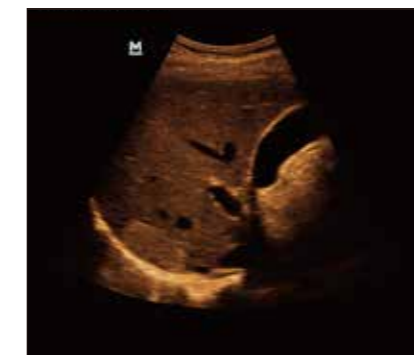
- Sleek, streamlined, and compact shape
- 15 inch full screen design
- 60 degree tilting angle adjustable monitor
- 2 universal transducer connectors
- 500GB hard disk for large patient data storage
- 1.5h duration time with rechargeable battery

Efficient workflow

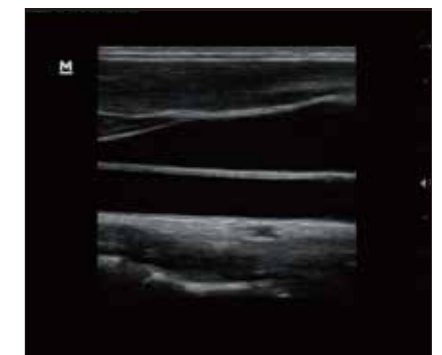
- **iTouch:** Quick image optimization with one-click operation
- **iZoom:** Gain instant full screen view with one-click operation
- **iStorage:** Directly transfer images and reports to PC via network cable
- User-defined keys for programmable personalized operations



Hepatic cyst



Hepatic hemangioma



CCA & Jugular vein



Brachial plexus



Fetal profile



3D of fetal face