

**DC-90**  
Diagnostic Ultrasound System

Insight, Intelligence, and more

X-Insight



# X-Insight

## An insightful solution to envision more

Mindray's brand new solution provides continual insight into the customer's clinical needs by creating evolving cutting edge ultrasound technology.

Full of vivacity, with the goal of insight into the future and pursuit of infinite possibilities, it is constantly improving with increased scalability.



## High efficiency with precision imaging

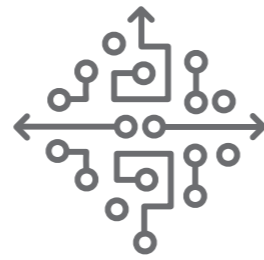
DC-90 with X-Insight focuses on customer requirements such as providing a more comprehensive and dedicated solution to ultrasound imaging and improving product usability to enhance diagnostic efficiency.

Based on an insightful look into customer needs, the DC-90 with X-Insight is designed to deliver high efficiency with precision imaging, which is empowered by eXpress clarity, eXceptional Intelligence, and benefits from an eXceeding experience.

# eXpress Clarity

## Lightning-speed imaging powered by X-Engine

The new X-Engine integrated with both GPU and CPU enables multi-core parallel processing for fast imaging and superb clarity.



## 'Touch and Go' with premier transducers



Single crystal transducers



ComboWave transducers

## Superb visualization by innovative image algorithm

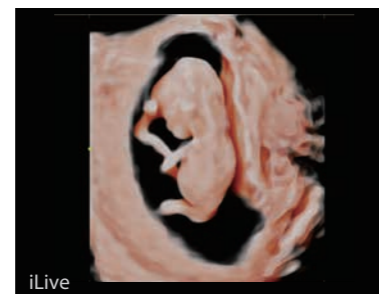
### Dehaze

Suppresses noise effectively, presents a cleaner image. Reduces interference with no loss to diagnostic information.



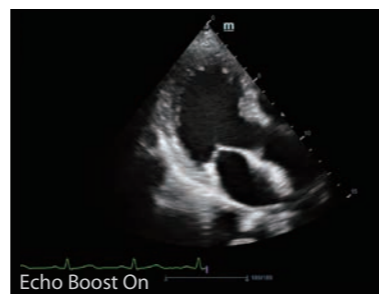
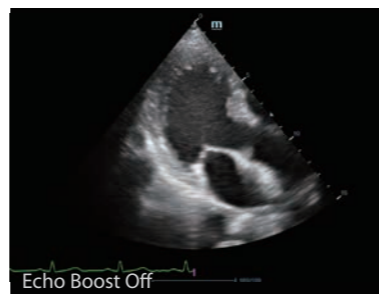
### iLive with Hyaline

New rendering method that dynamically applies transparency to rendered structures for a more comprehensive view of anatomy.



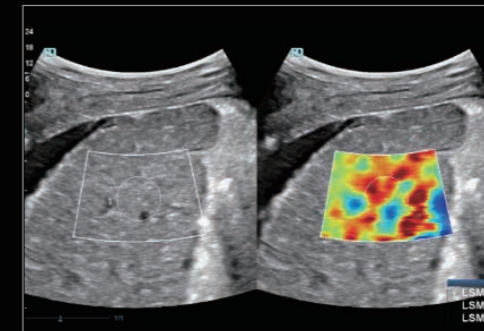
### Echo Boost

Better contrast and homogeneity for visualization of myocardial tissue layers.

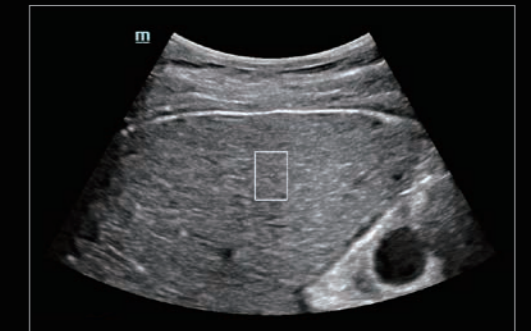


# eXceptional Intelligence

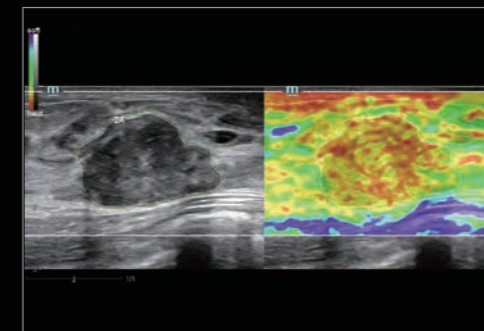
## Radiology solution



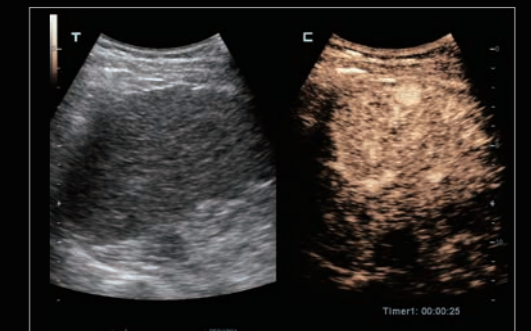
Sound Touch Elastography



Sound Touch Quantitative



Shell Analysis of Breast Mass

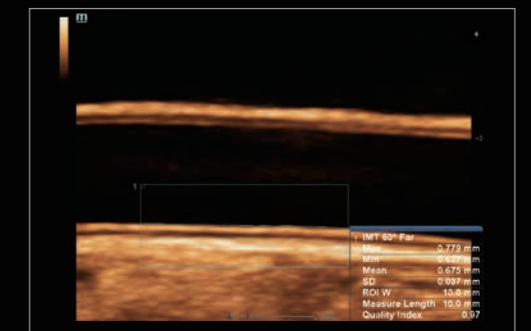


UWN+ CEUS

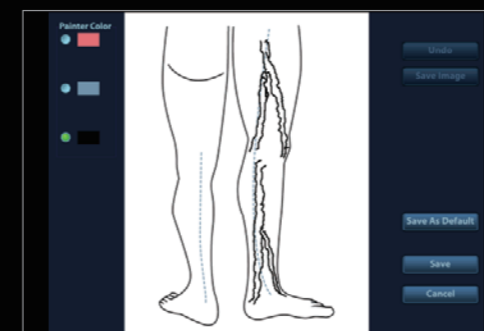
## Vascular solution



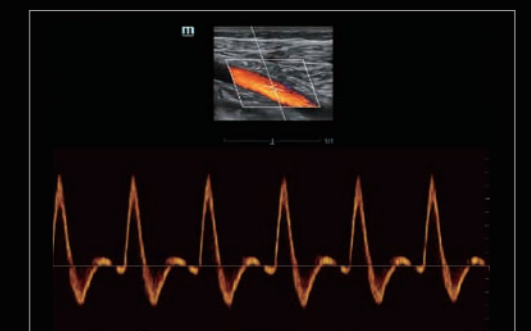
iWorks



Auto IMT



V-Mapping



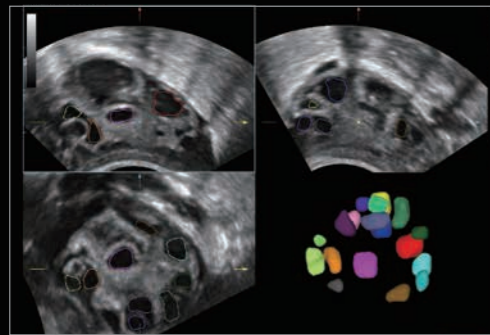
Smart Track

# eXceptional Intelligence

## Women's health solutions

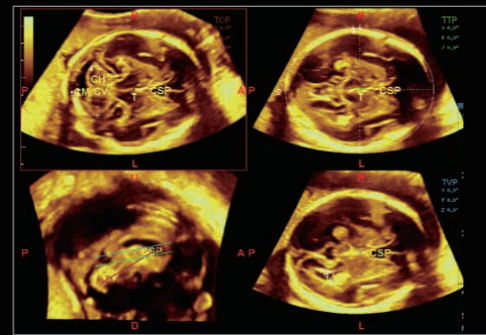
### Smart FLC

- Automatic volume measurement
- Precise detection



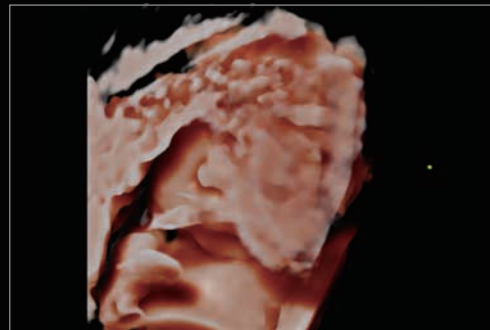
### Smart Planes CNS

Fully automatic and accurate detection, acquisition and calculation



### Smart Face

- Fast intelligent detection
- One-touch fetal face optimization



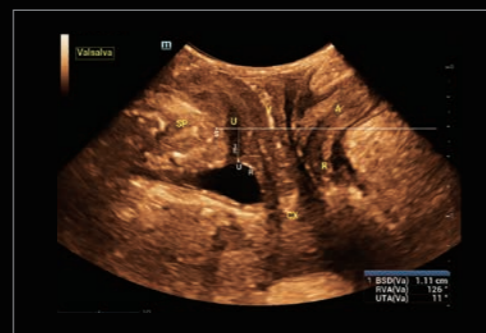
Smart Face Off

### Smart Pelvic

- Simplicity and high efficiency
- Short learning curve



Smart Face On



# eXceeding Experience

Innovation is inspired by clinical needs. The DC-90 with X-Insight is focusing on what matters to you and refines your user experience by providing clarity, flexibility, and intuitive technologies that exceed your expectations.

### Bigger standard LED monitor

Higher resolution  
Better visualization  
More diagnostic information



### Unique dual-wing floating arm

Unlimited angle floating design



### Ultra-slim multi-gesture touch screen

Powerfully gesture-based  
Usability beyond your expectations



### Built-in battery for continuous scanning

Higher convenience during transport



### 5 active sockets

Provide a wide range of clinical applications with ease

